

Unwrapped
FAST / 273°F

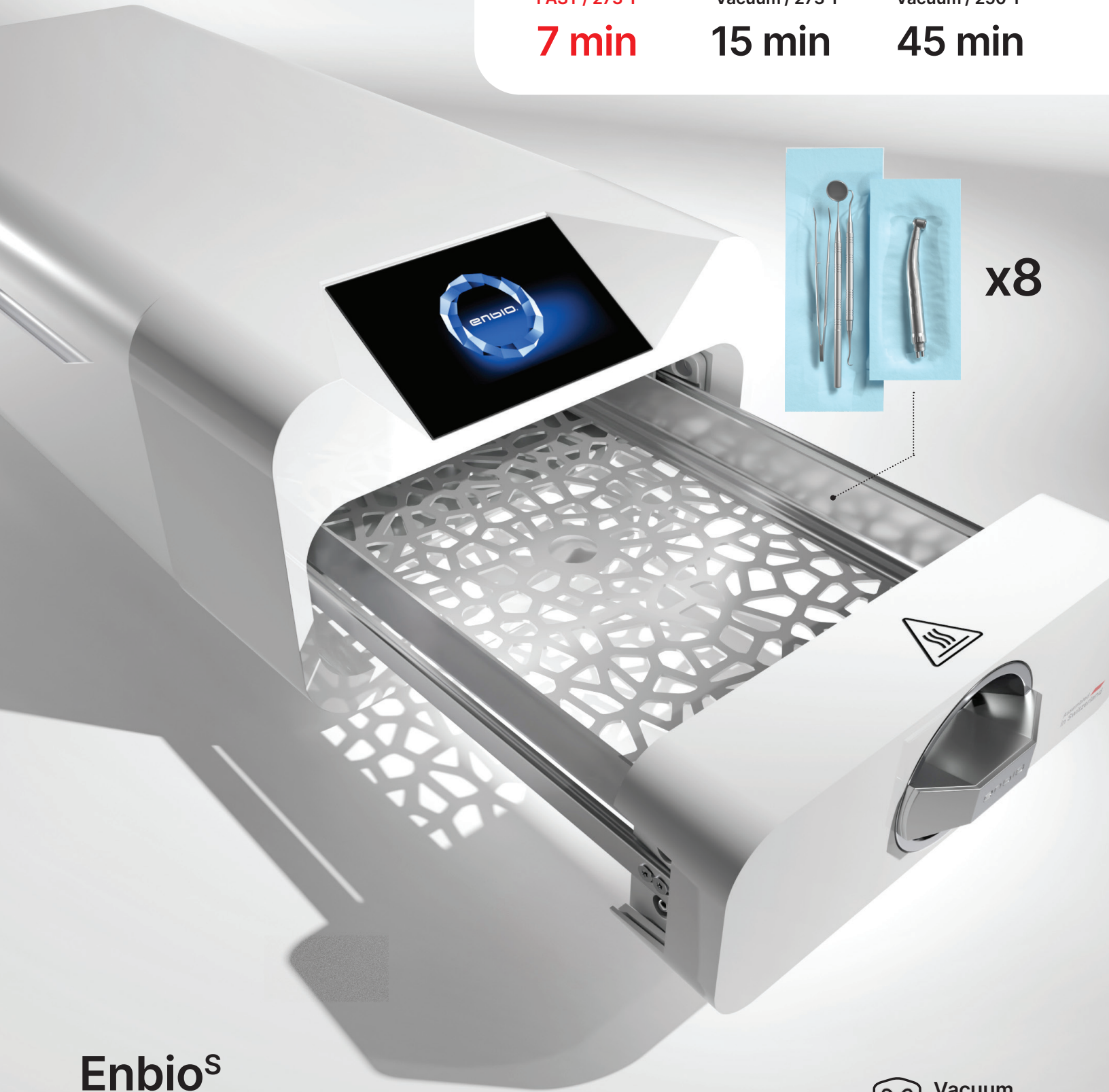
7 min

Wrapped
Vacuum / 273°F

15 min

Wrapped
Vacuum / 250°F

45 min



Enbio^S Technical Data

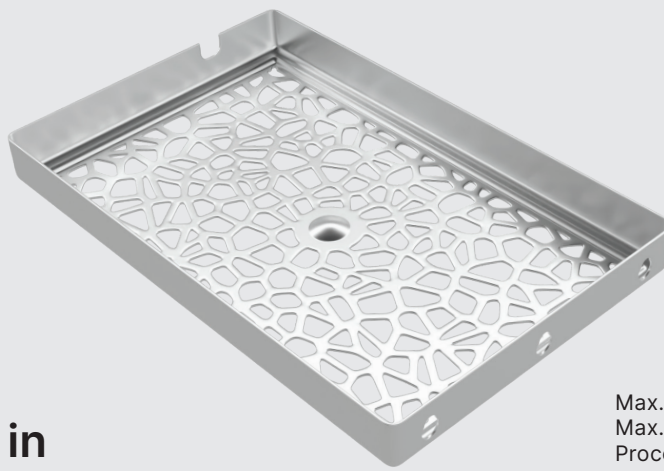


Vacuum
Pouches+
drying

Capacity

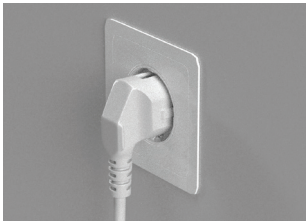


x8



Load space
11×7×1.3 in

Max. packages amount (circa) **8**
Max. recommended batch weight **1.1 lb**
Process chamber volume **2.7 l**



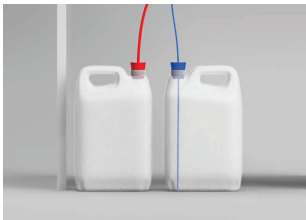
Power supply

Enbio^s works with any typical electrical outlet.



Data archiving

All process data are automatically written to a USB disk.



Water supply

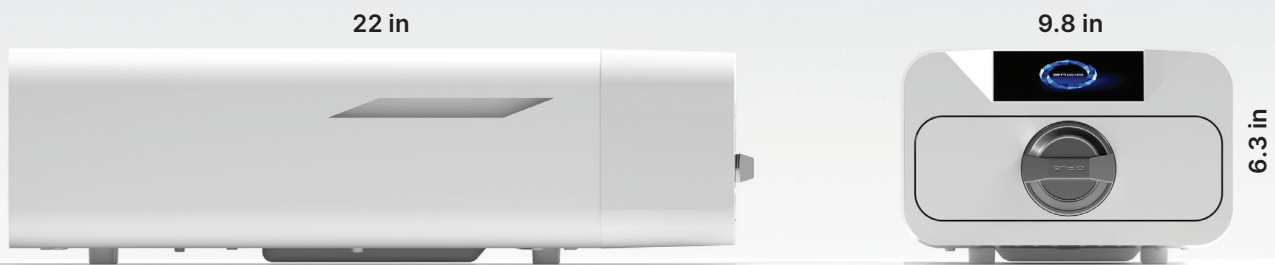
Enbio uses distilled water from external tank.



Process reports

Enbio Data Viewer (included) allows generating and printing detailed process reports from the data on USB.

Dimensions



Pressure & temperature

Working pressure **2.1 Bar/30.5 psi**
Max. pressure **2.3 Bar/33.4 psi**
Max. process temperature **137°C/278.6°F**

Electrical

Power supply **110-120V/60Hz**
Installed power **3.23 kW**
Max. power consumption **15 A**

Misc

Ingress protection **IP20**
Data archiving **USB**
Water conductivity* **< 15 µS/cm**

* - demineralized water only



Learn More